

Aladdin[®]

Blue Flame ^{MODEL} J280 KEROSENE SPACE HEATER

INSTRUCTION
MANUAL



from **Aladdin**

H, Inc.
A subsidiary of Aladdin Industries, Inc.
P.O. Box 100255
Nashville, Tenn. 37210

CAUTION:

Use pure kerosene only. Other fuel could cause damage.

Due to high surface temperatures, keep children, clothing, and furniture away from heater.

**INSTRUCTIONS
for operating your
ALADDIN BLUE FLAME HEATER**



However heat is produced, carelessness and ignorance can cause accidents, so for your own comfort and safety, please read and understand these instructions before lighting your heater.

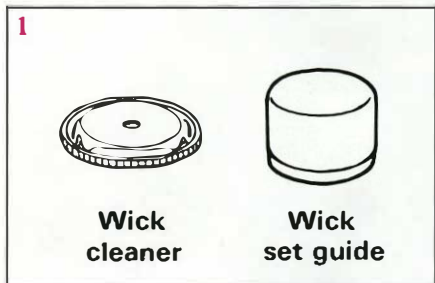
POINTS TO REMEMBER

- (1) If you suspect that the heater is not working properly, extinguish it immediately.
- (2) A disassembled and reassembled heater should be restarted only after it is tested in a safe place.
- (3) Use the heater in an upright position on level surface only.
- (4) Never use the heater near other flammable liquids; near readily combustible materials, such as curtains, newspapers, etc.; or in a windy location. Do not use the heater in narrow or tightly closed rooms or areas; do not use near a major entrance or hallway.
- (5) **USE ONLY PURE KEROSENE IN THE HEATER:** Do not attempt to use gasoline, white gas, paint thinner, or any other highly volatile liquid. Store kerosene in a cool, well-ventilated location, and only in a tightly sealed container.
- (6) Be sure to take all necessary precautions in handling kerosene: Use heater only in a well-ventilated room. If any kerosene is spilled, be sure to wipe it up immediately. Do not smoke when filling the heater, or expose fuel to open flame or high temperatures.
- (7) Exercise care not to bump or upset the heater unnecessarily; if it should be accidentally overturned, simply set it upright again.
- (8) Never place a pan or cooking utensil which is likely to boil or overflow on top of the heater.
- (9) Due to high surface temperatures, keep children, clothing and furniture away.
- (10) Before going to bed or leaving the house for a long period, turn off the heater and make sure, by looking at the wick from above, that it has been completely extinguished.

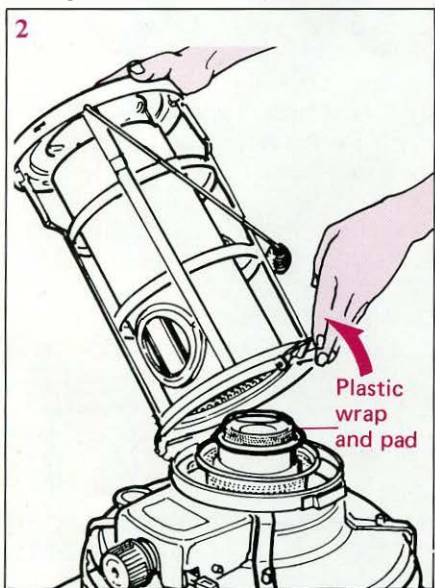
UNPACKING

We have been generous with the packing to make sure that your heater gets to you without damage; make sure you remove all the packing before you start.

- (1) Take the unit and packing material from the carton.
- (2) Take note that wick cleaner and wick set-guide are attached. (Picture 1)



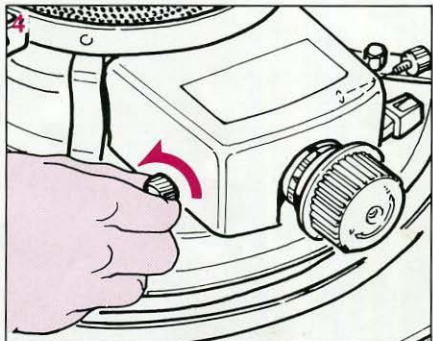
- (3) Release clip on lower side of heater and open heater to remove plastic wrap and foam pad from burner. (Picture 2)



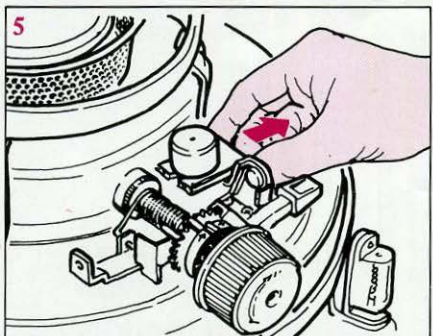
- (4) Push down the inner flame plate (Flame Spreader) to make certain it has not been dislodged during the transportation. (Picture 3)



- (5) Remove wick control system cover by removing screws on both sides of the cover. (Picture 4)



- (6) Remove packing from shut-off pendulum/weight. (Picture 5)



- (7) Replace cover.
- (8) Close heater by returning cylinder to original position making sure release clip latches.

** Keep the carton for the unit to use for storing.

FILLING

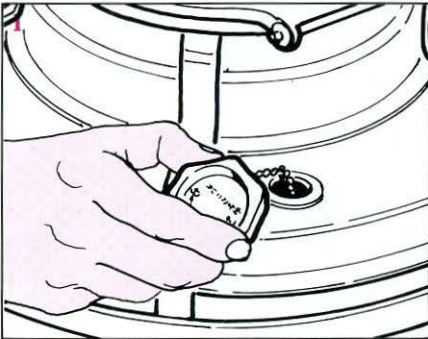
IMPORTANT: Do not allow heater to burn dry because damage to wick will result.

You must use only best quality kerosene. It is very dangerous to use any other fuel, including power kerosene or gasoline. Remember, put absolutely nothing but clean kerosene, in your tank or storage container and make sure it cannot become contaminated in any way.

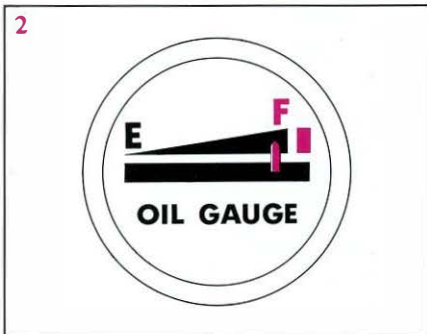
The oil gauge indicates the approximate amount of fuel in the tank and will warn you when the heater needs refilling. **Don't burn the heater dry because it will seriously shorten the life of the wick.**

HOW TO REFUEL:

- (1) Remove the filler cap by turning it counter-clockwise. (Picture 1)



- (2) Fill until oil indicator points "Full", and do not fill above "F". (Picture 2)



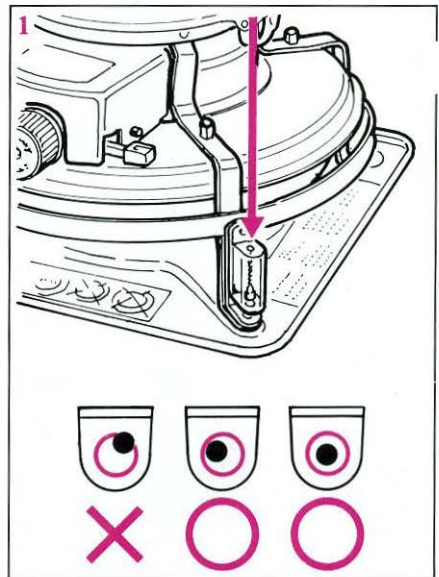
- (3) Replace and tighten filler cap to avoid any leakage, and wipe up any oil spilt.

BEFORE LIGHTING THE HEATER

1. Confirm that the Heater is on a Level Surface.

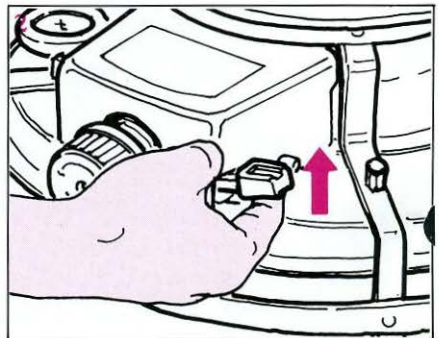
- (1) Check the level indicator pictured.
- (2) Diagrams marked with red circles indicate acceptable readings for the level indicator. Diagram marked with red "X" is not acceptable. (Picture 1)

* Failure to locate the heater on a level surface may prevent the emergency shut-off system from operating correctly.



2. Set the Emergency Shut-off System.

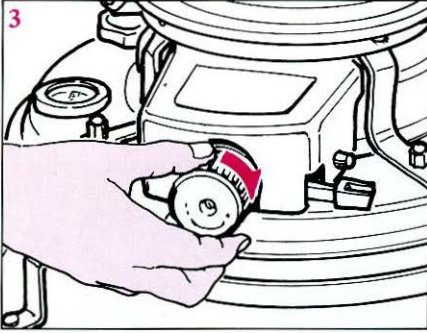
- (1) Push up the set lever. (Picture 2)



- (2) Turn the wick control knob clockwise until it stops. (Picture 3)

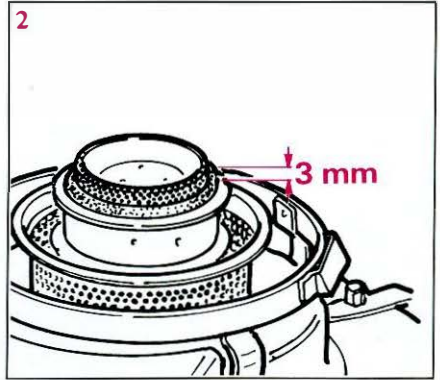
If system is triggered, follow these steps to reset.

- * **IMPORTANT:** Heater cannot be operated without setting this system.



- (2) There should be a flame spreader which has a lot of small holes in it, fitted in the center tube of the tank. Make sure it is free of dust. If necessary, remove the flame spreader and clean it with a soft brush. If it has fallen out or is not seated properly it must be replaced and pushed fully home before the heater is lit. Make sure the burner basket is locked fully into the tank.

- (3) Turn the wick control knob clockwise to raise the wick about 3 mm above the wick cylinder. (You should still see five rows of holes on the flame spreader.) (Picture 2)



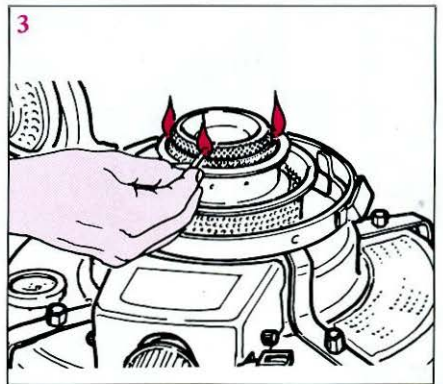
LIGHTING

IMPORTANT: When you use the heater for the first time, or have fitted a new wick, do not light it for at least an hour so that the wick has a chance to soak up enough kerosene.

- (1) Release the clip on the lower side of the heater and open the heater. (Picture 1)



- (4) Light the wick in two or three places so that flame appears on the wick all the way around.



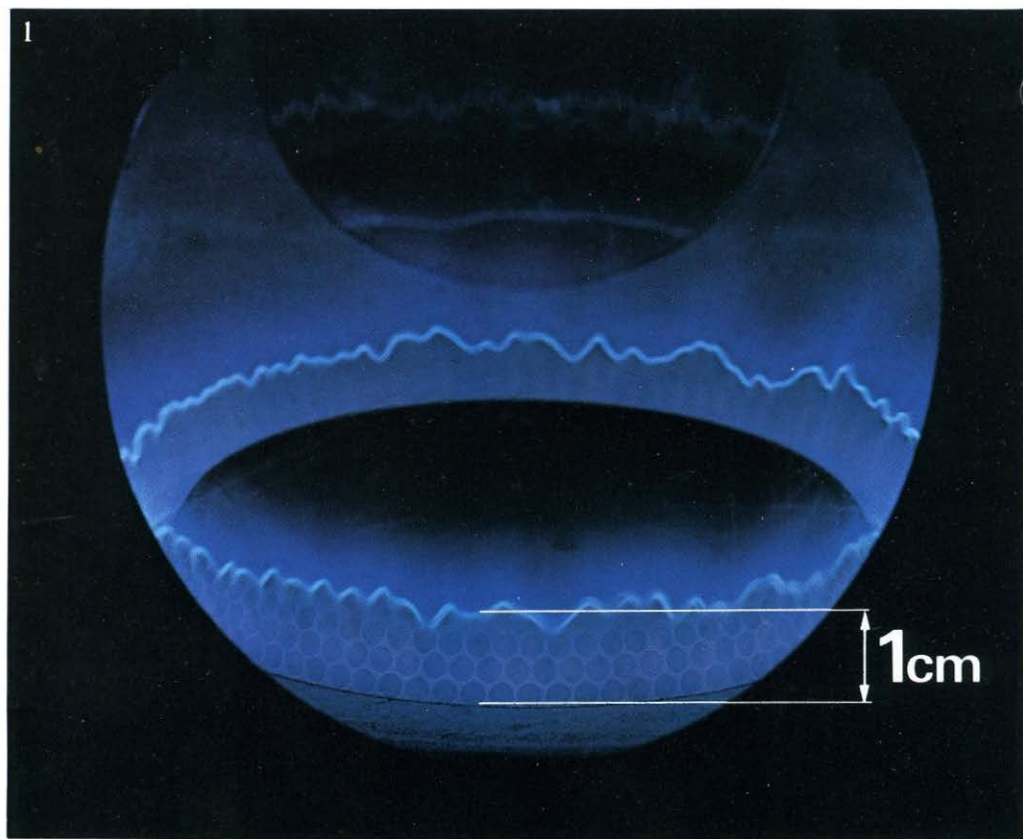
- (5) Take care not to drop the match in the burner mechanism.

- (6) Close the heater, checking carefully that the release clip is properly fastened.
- * Ventilate the room from time to time to insure an adequate supply of fresh air.
 - * Some kerosene odor may be noticed shortly after lighting the heater. This can be eliminated by airing the room

approximately 20 to 30 minutes after lighting the heater. This should not continue once the heater has reached working temperature.

- * The heater reaches working temperature very quickly, so immediately adjust the wick to give desired heat output within the limits of the SAFE BLUE FLAME.

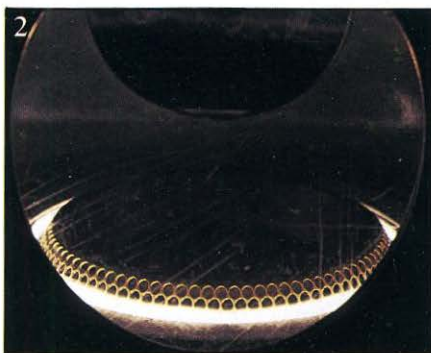
HEATER ADJUSTMENT: THE SAFE BLUE FLAME



- (1) Remember that your safety indicator is the color of the flame. When the flame is a clear blue all over you have got the SAFE BLUE FLAME. The picture (1) above shows the SAFE BLUE FLAME setting. The length of

the flame should be about 1 cm.

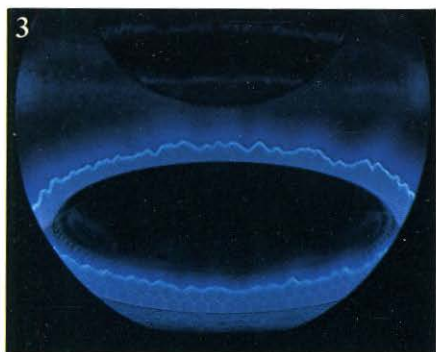
- * When the flame shows any yellow the wick is too high or too low or something is wrong with the heater; never let the heater burn like this.



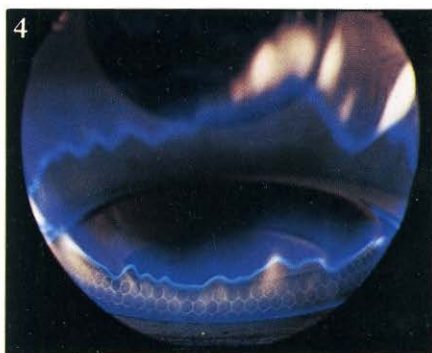
- (2) The picture (2) above shows the flame just after lighting. This flame is too low. Operating the heater at this setting will result in damage to the wick, an unpleasant odor, and potentially harmful combustion by-products.

Raise the wick until a completely blue flame is obtained and then raise it a little more so that it cannot revert to yellow; this is the lowest setting for the SAFE BLUE FLAME.

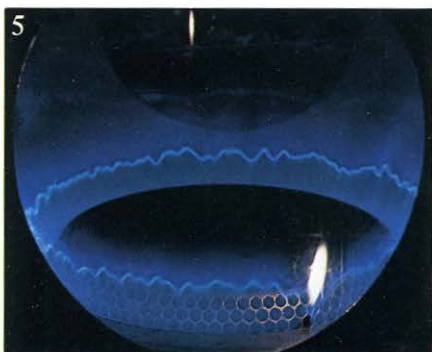
As you turn the wick up move the blue flame will grow and you may notice a reddish glow above the flame and possibly intermittent red flecks of burning dust. This is quite normal.



- (3) **CAUTION:** The above setting looks normal but the flame is too low. This will cause incomplete combustion and an unpleasant odor. Adjust the flame until a flame length of at least 1 cm is obtained as indicated in Picture 1.



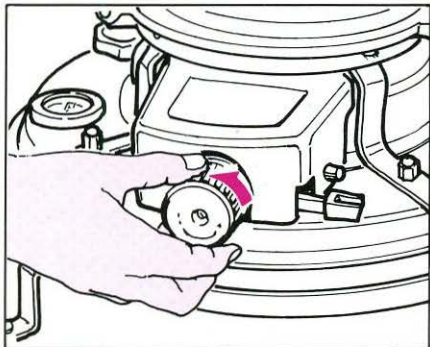
- (4) The setting pictured above is too high. Lower the wick until you get rid of the yellow spikes and you then have the highest setting for the SAFE BLUE FLAME.



- (5) The isolated spike of yellow flame pictured above indicates foreign particles on the wick such as pieces of a match or a frayed wick. Remove any such particles and/or use the wick cleaner as instructed and the flame should return to normal.

EXTINGUISHING

Turn the wick down (counter-clockwise) until the flame goes out. After you have turned the wick down to extinguish the heater, turn it up again and check to make sure it is really out.



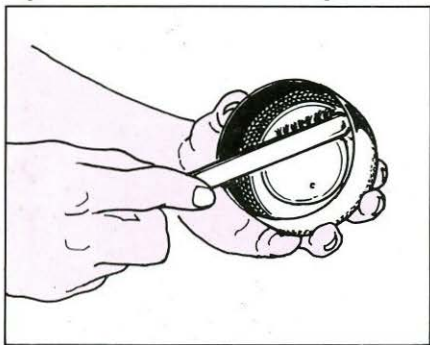
IMPORTANT:

- * To avoid wick damage, do not use the emergency shut-off to extinguish the heater under normal conditions.
- * Extinguish the heater before going to bed.
- * Always make sure that the heater has been completely extinguished.

CLEANING THE HEATER

A dirty heater may smell bad and can be dangerous particularly if fluff or carbon is blocking any of the air holes. Therefore the following steps should be taken periodically:

- (1) Use a soft brush to remove dust blocking the air holes in the flame spreader.

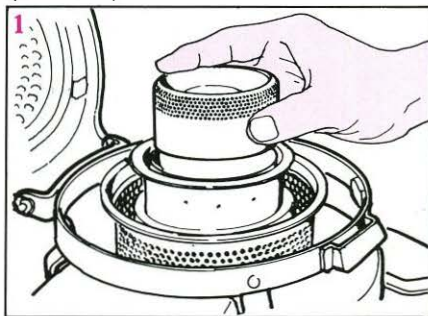


- (2) Remove dust from the flame spreader and wick cylinder with a soft brush.
- (3) Carefully loosen and remove carbon deposits on the wick cylinder by scraping gently.
- (4) Use a soft cloth or brush to remove dust from the body of the heater. Be sure to remove all dust and particles from the base plate as these can be drawn into the heater where they will clog the flame spreader.
- (5) Wipe off any kerosene spilt on the heater and/or base plate. Make sure the oil indicator cap and filler cap are secure.
 - * Hot soapy water can be used in cleaning as long as none gets in the tank or on the wick, but you must NEVER USE ABRASIVES.

USING THE WICK CLEANER

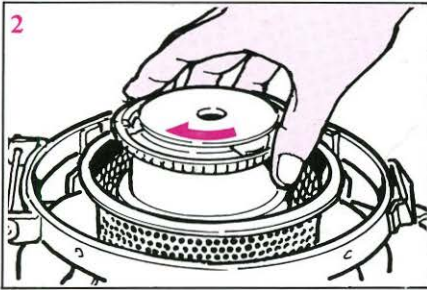
A good flame depends on a clean wick. The wick should not be cleaned until it has been used for 50 hours or more. Thereafter, the wick should be cleaned about once a week when the heater is in use.

- (1) Open the heater and remove the flame spreader after turning down the wick. (Picture 1)

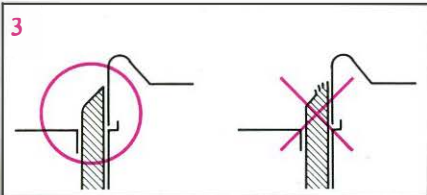


- (2) Put the wick cleaner into the wick cylinder as shown. (Picture 2)
- (3) While turning the wick cleaner clockwise with one hand, slowly turn the wick up with the other. Maintain a gentle downward pressure on the wick cleaner to keep it level and touching the rim of the burner basket. When the

rising wick reaches the cleaner, black carbon will come through the three holes. This will soon stop and the wick will be clean and properly shaped for further use.

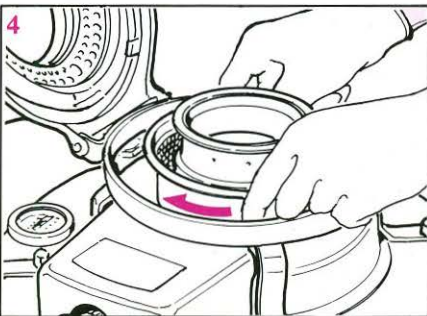


* The wick must be kept shaped at the correct angle and this can only be done with the wick cleaner provided. Never use scissors, razor blades, etc.. After use please store the wick cleaner in a safe place. Do not keep it near the heater chimney as the temperature could be sufficient to soften and distort it. (Picture 3)

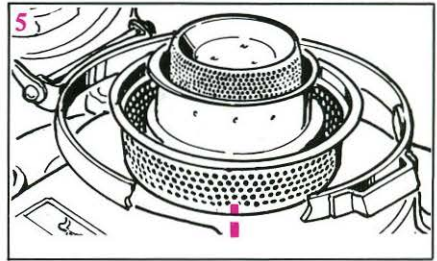


(4) Lower the wick and unscrew the wick cylinder. Wipe away all particles deposited during wick cleaning. (Picture 4)

* To protect hands, wear gloves when removing and replacing wick cylinder.



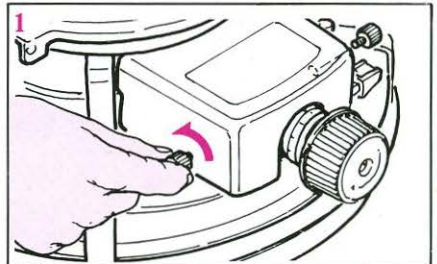
* When replacing the wick cylinder, turn it clockwise. Line up the red marks on the wick cylinder and tank as closely as possible while making sure the wick cylinder is securely in place. (Picture 5)



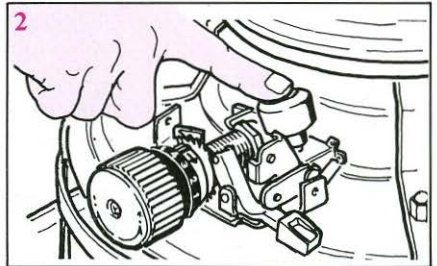
WICK POSITION ADJUSTMENT

In the event that a correct, safe blue flame setting cannot be obtained even when the wick control knob is turned to the maximum setting, follow these steps to reposition the wick:

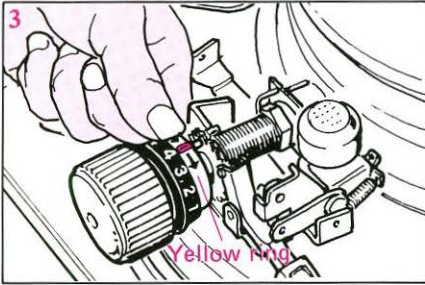
(1) Release the latch on the lower side of the heater and open the heater. Remove wick control system cover by unscrewing the screw on each side. (Picture 1)



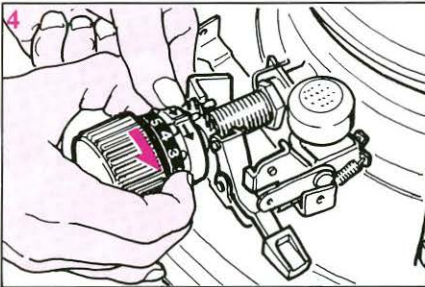
(2) Release the emergency shut-off device by gently moving the pendulum to the side until the device triggers. (Picture 2)



- (3) Turn the yellow ring until the red mark on the ring lines up with the red pin. (Picture 3)



- (4) Pull and turn the black ring to the right one numerical setting holding the yellow ring in position with the left hand. (Picture 4)



Example: If numerical setting
on black ring is 1 move to 2
on black ring is 2 move to 3
•
•
on black ring is 12 move to 1

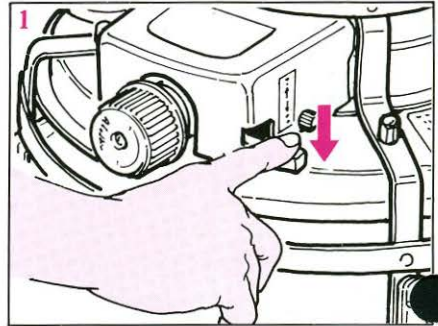
This completes the wick adjustment procedure and the heater can be re-assembled.

Note: Do not over adjust the wick as wick length over 9 mm above the cylinder top can result in abnormal combustion. The wick can be repositioned 2 to 3 times before a new wick is needed. Any time that the wick cannot be correctly adjusted, a replacement is needed.

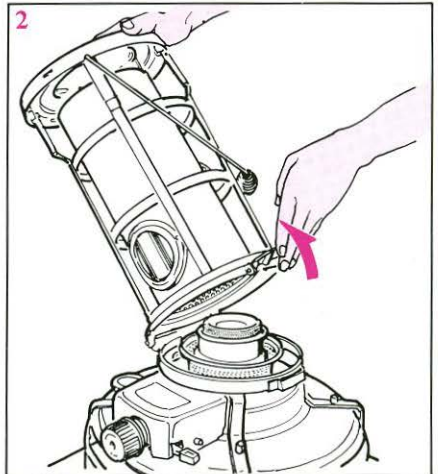
Do not pull the black ring out except when adjusting the wick or misalignment of the wick may result.

REPLACING THE WICK

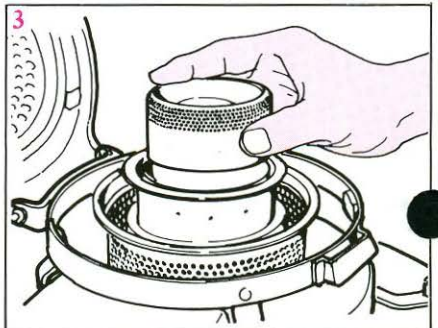
- (1) Release the emergency shut-off device by pushing the set lever down. (Picture 1)



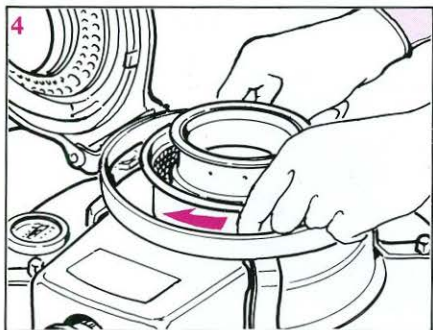
- (2) Release the clip on the lower side of the heater and open the heater. (Picture 2)



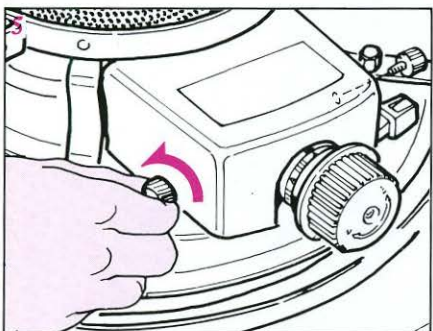
- (3) Remove the flame spreader. (Picture 3)



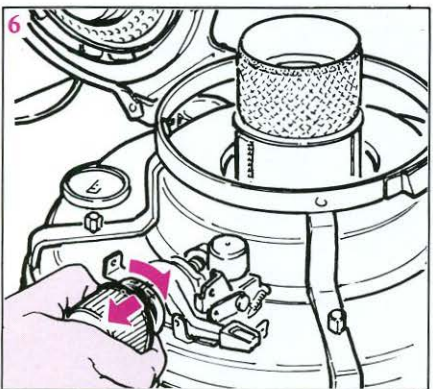
- (4) Unscrew and remove wick cylinder.
(Picture 4)



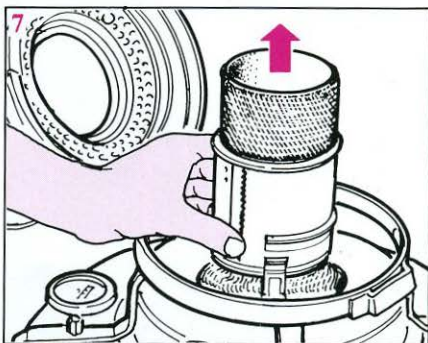
- Remove the wick control system cover by unscrewing the screw on each side.
(Picture 5)



- (6) Pull wick control knob and black ring out and turn to right to fully raise wick.
(Picture 6)

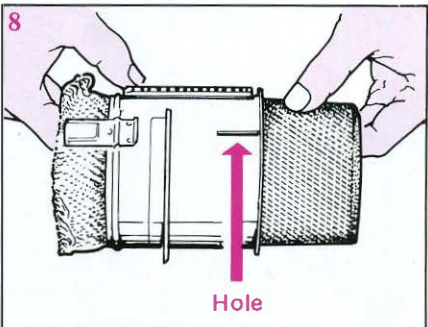


- (7) Remove wick and wick holder from wick guide cylinder. (Picture 7)

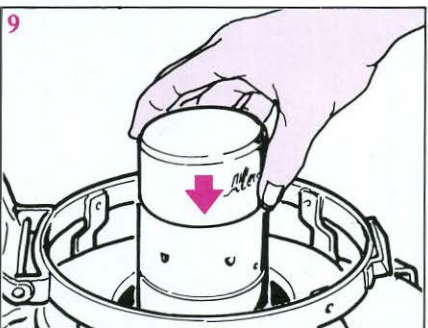


- (8) Remove old wick from wick holder.
(9) Install new wick making sure that hook on new wick fits into hole in the wick holder. (Picture 8)

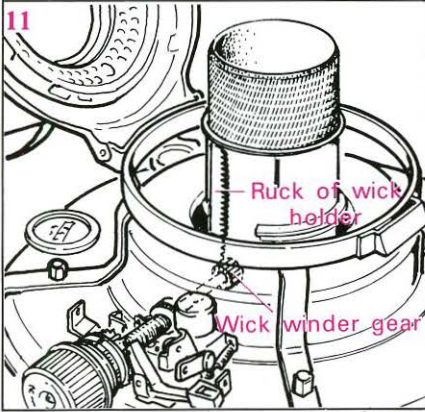
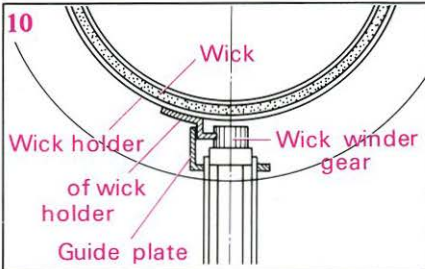
- * Soaking wick in a small amount of kerosene at this point makes remaining installation steps easier.



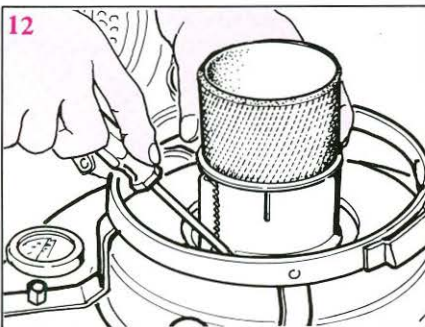
- (10) Fit the wick-set-guide attachment over wick guide. (Picture 9)



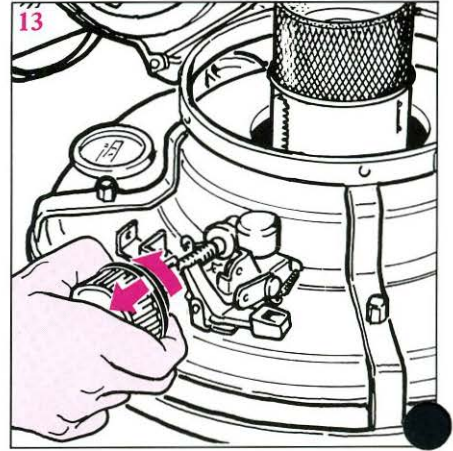
- (11) Fit skirts of new wick over wick-set-guide and engage wick winder gear to rack of wick holder. (Picture 10, 11)



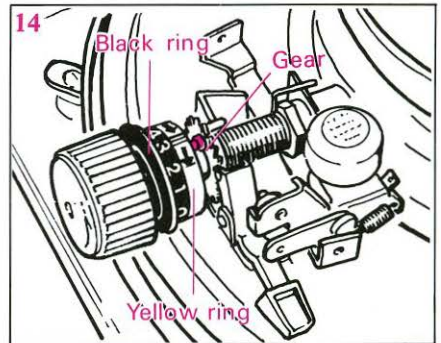
- (12) Fit wick skirts into the wick case gently with a screw driver or similar tool. (Picture 12) Take care not to tangle wick in wick winder gear or otherwise become obstructed so that wick skirts cannot reach bottom of tank.



- (13) Pull wick control knob and black ring out and turn to left lowering wick until it stops. (Picture 13) Make sure that the yellow tape around the inside of the wick does not get caught on the wick guide cylinder.

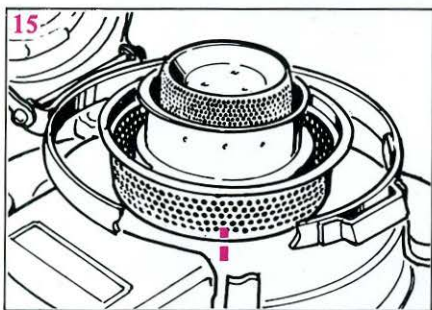


- (14) While pulling the wick control knob and black ring out, turn the yellow ring in the direction indicated by the arrow until it stops. Adjust slightly so that the red mark on the yellow ring lines up with the red pin on the wick winder gear. Then line up the number on the black ring with the red line on the yellow ring and release the wick control knob and numbered ring. (Picture 14)



- (15) Remove the wick-set-guide.
 (16) Replace the flame spreader and secure the wick cylinder.

- * To secure the wick cylinder, turn it clockwise until the red mark on cylinder lines up with the red mark on the heater tank. If the cylinder is still loose at this point, continue to tighten until it is secure. (Picture 15)



(17) Replace the wick control system cover.

* Wait one hour before lighting to allow the wick to absorb sufficient kerosene.

Failure to do so may result in damage to the wick.

COOKING

If you want to boil water or cook, remove the top cover to expose the boiling ring. A lifting tool is available which fits into one of the holes in the top cover.

MAINTENANCE

Replace any damaged or worn out part immediately with a genuine Aladdin part – we cannot accept any responsibility if substitutes are used.

Once a year you should rinse out the tank with clean kerosene and fit a new wick.

If you cannot get the **SAFE BLUE FLAME** or are in any difficulty take the heater to your nearest Aladdin dealer. Never use a heater which is not working properly.

STORING

- (1) Clean the inner flame plate. (Flame Spreader)
- (2) Clean the wick with wick cleaner.
- (3) Scrape carbon off edge of wick cylinder.
- (4) Wipe away any dust or kerosene on the tank or base plate.
- (5) Clean any stain, etc. on outer cylinder (Frame) etc.
- (6) Release the emergency shut-off system.
- (7) Remove kerosene from the tank and

rinse with fresh kerosene. Keep the wick wet by covering the wick cylinder with plastic wrap.

- (8) Put the heater unit and the attachment (Wick cleaner/wick-set-guide) into the carton case.
- (9) Kerosene should be kept in a dark and cool place in a sealed metal can/container.

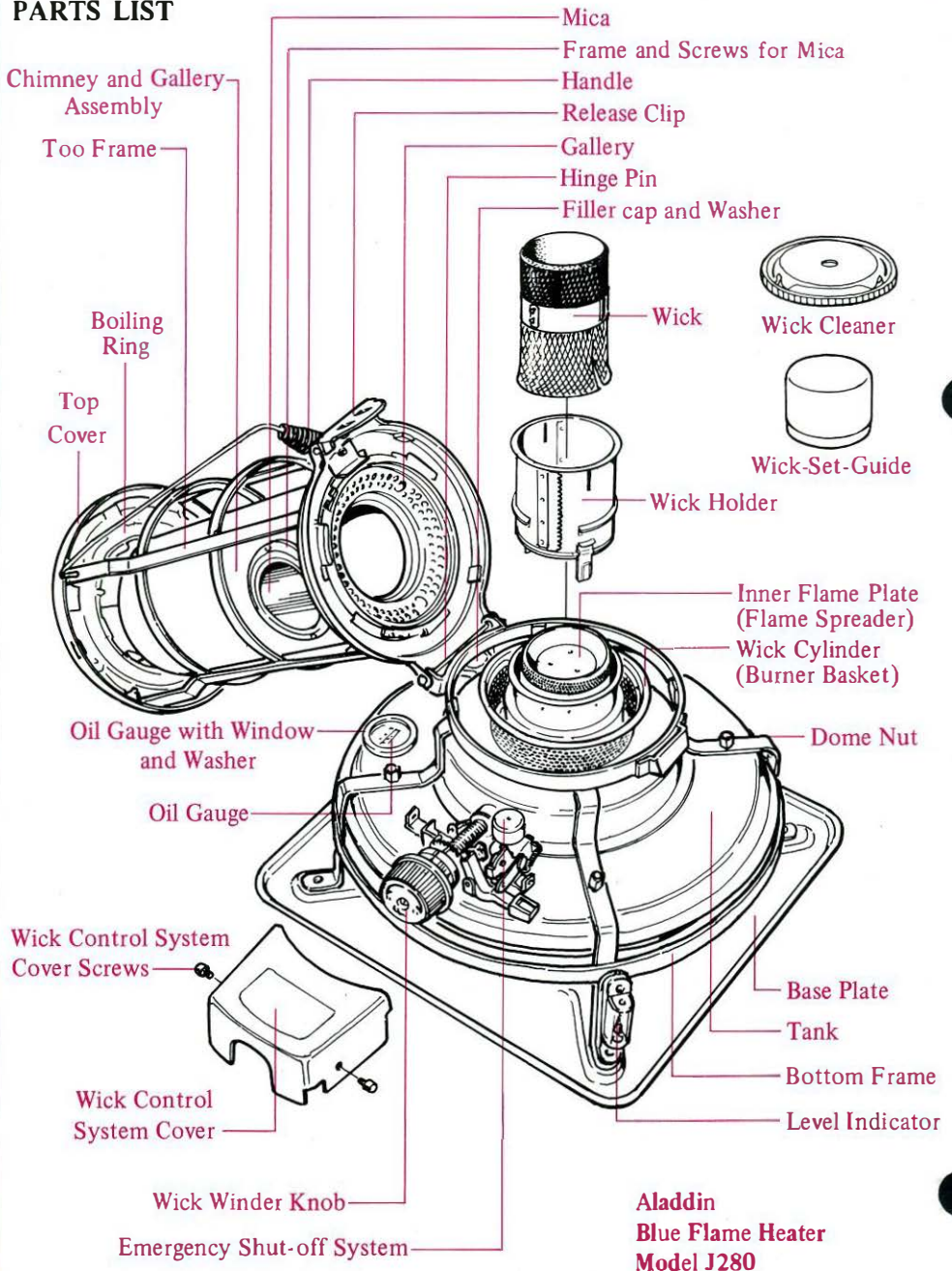
POINTS TO REMEMBER

- (1) Use good quality, clean kerosene only—petrol (gasoline) is dangerous.
- (2) Don't add salt or anything else to the fuel—it's useless and harmful.
- (3) Don't fill or carry the heater while it is lit.
- (4) Don't dry clothes over, or too near, the heater.
- (5) Always provide adequate ventilation.*
- (6) Maintain the **SAFE BLUE FLAME**. If you can't—put the heater out!
- (7) Replace damaged parts immediately.
- (8) Use only Aladdin parts—others can be dangerous.
- (9) Watch where you put it—particularly with children around.
- (10) Don't use in a draught.

* Most rooms are adequately ventilated if there is an unblocked flue or other substantial air inlet at floor level, together with a fanlight or window slightly open, provided such opening is not obstructed by completely drawn curtains.

NEVER USE YOUR KEROSENE HEATER IN A ROOM WHICH HAS BEEN COMPLETELY SEALED AGAINST DRAUGHTS.

PARTS LIST



Blue Flame ^{MODEL} **J280** HEATER SPECIFICATIONS

SPACE HEATED	: Approx. 18' x 20' area.
HEAT OUTPUT	: 9,320 B.T.U. per hour.
SYSTEM	: Kerosene/wick system.
TYPE	: Convection.
TANK CAPACITY	: Approx. 1.3 gallons.
WICK	: Cotton wick.
FUEL	: Best quality lighting kerosene.
FUEL CONSUMPTION	: 3/5 pint per hour.
DURATION	: Over 18 ~ 28 hours with full tank.
TANK	: Leak-free dual tank for extra safety.
DIMENSIONS	: 17-3/4" (H) x 15-3/4" (W) x 14-3/4" (D)
WEIGHT	: 13-1/4 LBS.

SPARE PARTS

Flame spreader (Inner Flame Plate)

Wick

Burner basket (Wick Cylinder)

Wick cleaner

Hinge pin
c/w nuts & washers

Lifting tool

Boiling ring

Boiling ring screw

Mica

Oil gauge only (optical)