

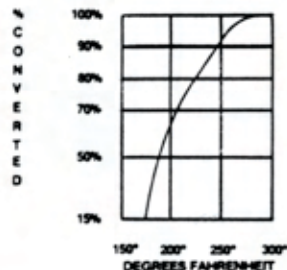
CONGRATULATIONS!

YOU HAVE JUST PURCHASED AN OUTSTANDING PRODUCT THAT WILL CLEAN UP THE AIR YOU BREATHE. THE **BREATHE EASY™ FILTER** DEODORIZES KEROSENE FUMES. IT CHANGES EXHAUST CONTAMINATION SUBSTANCES SUCH AS CARBON MONOXIDE, EXHAUST FUME, AND SMOKE PARTICLES INTO HARMLESS CARBON DIOXIDE AND WATER VAPOR. AND THE JOB IS DONE WITHOUT AFFECTING YOUR HEATER'S OPERATION. (SEE PERFORMANCE CHARTS). . . THE RESULT OF FOUR YEARS' RESEARCH AND PRODUCT DEVELOPMENT.

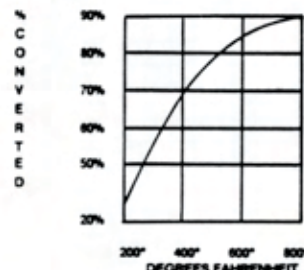
BREATHE EASY™ . . . MAKES GOOD HEATING GREAT!

MANUFACTURED IN AMERICA

REMOVAL CARBON MONOXIDE (CO)



REMOVAL EXHAUST FUME & SMOKE PARTICLES



CAUTIONS

- NEVER ATTEMPT TO INSTALL THE FILTER WHILE HEATER IS IN OPERATION OR UNLESS HEATER IS COOL.
- HANDLE FILTER WITH CARE; DO NOT BEND OR TWIST THE SCREEN ITSELF. THE PLATINUM COATING COULD BE DAMAGED, REDUCING PERFORMANCE.
- USE OF IMPURE FUEL WILL DESTROY YOUR WICK AND DAMAGE THE CATALYST. USE ONLY **WATER CLEAR** KEROSENE AS SUGGESTED BY THE MANUFACTURER OF YOUR HEATER - **USE NO ADDITIVES.**
- YOUR HEATER MUST BE "RUNNING RIGHT". LOW BURN, OR EXCESSIVE SMOKE AND SMELL WHILE THE HEATER IS RUNNING INDICATES A BAD WICK, OR A POORLY ADJUSTED WICK, OR BAD KEROSENE. HAVE YOUR HEATER ADJUSTED SO IT RUNS CLEAN . . . BEFORE YOU INSTALL **BREATHE EASY**, IN ORDER TO GET MAXIMUM PERFORMANCE.
- CLEANING IS UNNECESSARY — **BREATHE EASY** IS MAINTENANCE FREE — DO NOT WASH OR SCRUB!
- **BREATHE EASY FILTER** IS DESIGNED FOR LONG SERVICE LIFE. REPLACE ONLY WHEN EXCESS START-UP AND SHUT-DOWN ODORS RE-APPEAR.
- **BREATHE EASY FILTER** MAY SET OFF NUISANCE ALARMS ON SOME BRANDS OF SMOKE DETECTORS. THIS IS DUE TO THE FILTER'S INCREDIBLE CONVERSION EFFICIENCY. SOME ALARMS ARE SENSITIVE TO THE INCREASED CARBON DIOXIDE AND WATER VAPOR GENERATED BY THE FILTER. IF NECESSARY, RE-LOCATE THE HEATER AND/OR ALARM DEVICE.

IMPORTANT . . . FOLLOW ALL INSTRUCTIONS

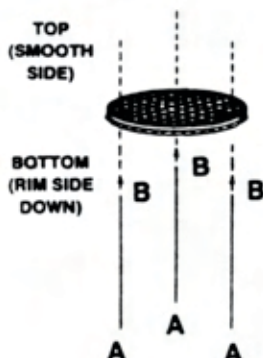
(ONLY PLIERS AND RULER NEEDED)

THERE ARE TWO BASIC KINDS OF KEROSENE HEATERS: CONVECTION (SPREAD FLAME), AND RADIANT (ENCLOSED FLAME). THE SCREEN IS SUSPENDED OVER THE TOP OF THE BURNER ASSEMBLY IN BOTH TYPES OF HEATERS.

WHEN ANY KEROSENE HEATER IS RUNNING, THE UNSEEN EXHAUST PATTERN LOOKS LIKE AN HOURGLASS. BECAUSE EXHAUST GOES UP AND NARROWS TO THE CENTER OVER THE BURNER, THE SCREEN MUST BE PLACED **ABOVE** AND **CENTERED** OVER THE BURNER ASSEMBLY.

USE ONLY THE THREE MOUNTING WIRES SUPPLIED!

PUSH 3 WIRES UP THRU BOTTOM OF FILTER IN 3 HOLES PROVIDED. WITH LOOP (A) IN PLACE AS SHOWN

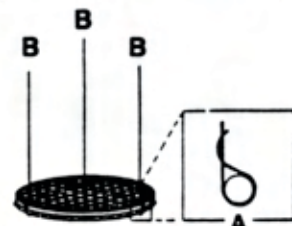


USING PLIERS, CLOSE WIRE LOOP (A) AROUND SCREEN RIM (**REMEMBER RIM MUST FACE DOWN**).

NOTES:

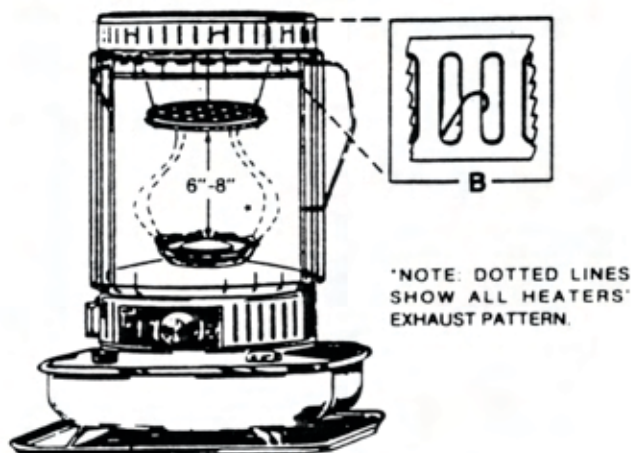
- CENTER OF FILTER SHOULD BE OVER CENTER OF BURNER
- LEVEL THE FILTER
- MAKE SURE LIP FACE IS DOWN
- USING RULER, MAKE SURE HEIGHT IS CORRECT (3"-4" RADIANT HEATER; CONVECTION HEATER 6"-8")
- BE SURE FILTER DOES NOT INTERFERE WITH BURNER ASSEMBLY MOVEMENT (LIGHTING, REMOVAL)
- FILTER MUST HAVE MINIMUM ONE HALF INCH CLEARANCE FROM INSIDE TOP OF HEATER
- HEIGHT OF FILTER CAN BE ADJUSTED OVER BURNER FOR MAXIMUM EFFECTIVENESS (HIGHER USUALLY BETTER)

CROSS-SECTION OF FILTER RIM ENCLOSED BY PRE-SHAPED END OF WIRE



NOW THAT SUPPORT WIRES ARE FIRMLY SECURED TO FILTER, PROCEED WITH INSTALLATION IN CONVECTION HEATER OR RADIANT HEATER.

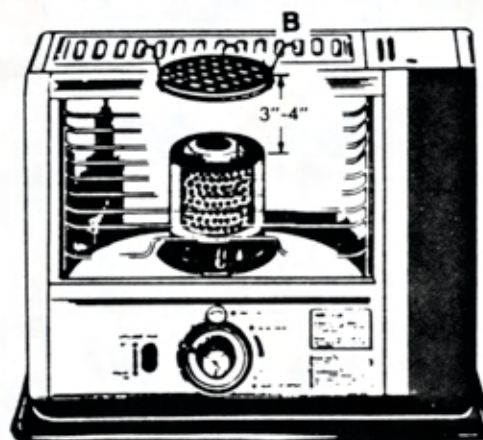
CONVECTION (SPREAD FLAME) HEATER



CONVECTION (SPREAD FLAME) INSTALLATION

- 1 USE HEATER TOP OR RIM WHERE POSSIBLE. REMOVE TOP OF HEATER. IF IT HAS VENT HOLES OR RIM, USE THESE FOR SECURING THE FILTER. IF THERE ARE NO VENT HOLES OR RIM, HOLES ARE LOCATED AROUND TOP OF BARREL. THESE CAN BE USED.
- 2 FILTER SHOULD BE CENTERED, LEVEL AND SUSPENDED SIX TO EIGHT INCHES OVER BURNER (USE RULER TO MEASURE 6"-8" FROM TOP OF BURNER).
- 3 NOW, HOLDING FILTER WITH FREE ENDS OF THREE WIRES UP, GUIDE THROUGH VENT HOLES.
- 4 USING PLIERS, ONE AT A TIME, BEND EACH WIRE BACK THROUGH NEXT VENT HOLE. THE FILTER SHOULD NOW BE LOOSELY IN PLACE.
- 5 USE "FLEX" IN LOOSELY ATTACHED SUPPORT WIRES TO GUIDE FILTER CAREFULLY INTO FINAL POSITION (CENTERED, LEVEL, 6"-8" OVER BURNER).
- 6 FOR FINAL POSITION, USE PLIERS TO BEND WIRE SUPPORTS AND SECURE FIRMLY TO VENT HOLES.

RADIANT (CLOSED FLAME) HEATER



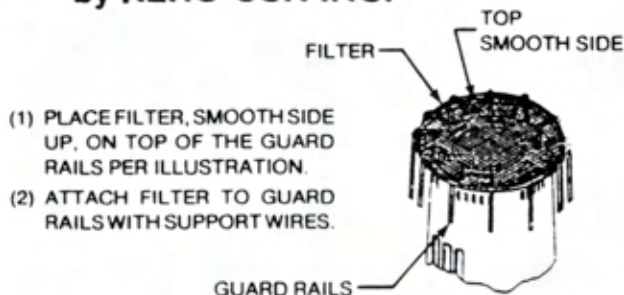
RADIANT (CLOSED FLAME) INSTALLATION

- 1 REMOVE BURNER POT SO THERE IS ROOM TO WORK IN (PUT IN A SAFE PLACE).
- 2 NOW HOLD FILTER WITH WIRE ENDS UP. PLACE INSIDE HEATER, AND GUIDE ENDS (B) LOOSELY UP THROUGH CONVENIENT VENT SLOTS.
- 3 NOW, ONE AT A TIME, BEND ENDS BACK THRU NEXT VENT SLOT. THE FILTER SHOULD BE LOOSELY IN PLACE.
- 4 RETURN BURNER POT TO OPERATING POSITION.
FILTER SHOULD BE CENTERED AND SUSPENDED 3 TO 4 INCHES OVER TOP OF BURNER (USE RULER) BE SURE FILTER HAS 1/2" CLEARANCE FROM HEATER REFLECTOR
- 5 USE "FLEX" IN LOOSELY ATTACHED SUPPORT WIRES TO MOVE FILTER CAREFULLY INTO FINAL POSITION (CENTERED, LEVEL 3"-4" OVER BURNER).
- 6 FOR FINAL POSITION, USE PLIERS TO BEND WIRE SUPPORTS AND SECURE FIRMLY TO TOP VENTS.

THE **BREATHE EASY** FILTER IS DESIGNED TO BE INSTALLED AS SHOWN ABOVE. THERE ARE VERY FEW HEATER DESIGNS WHICH REQUIRE ALTERNATE INSTALLATION. IN GENERAL, IF YOUR HEATER HAS NO TOP VENT, TOO NARROW A BARREL, OR EXTREMELY LIMITED EXHAUST FLOW VENTS, THE FOLLOWING INSTALLATION IS NECESSARY.

ALTERNATE INSTALLATION

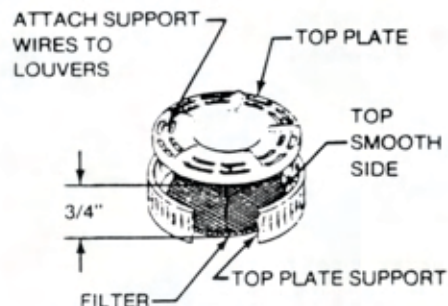
INSTRUCTIONS FOR OMNI 15™ by KERO-SUN INC.®



- (1) PLACE FILTER, SMOOTH SIDE UP, ON TOP OF THE GUARD RAILS PER ILLUSTRATION.
- (2) ATTACH FILTER TO GUARD RAILS WITH SUPPORT WIRES.

- (1) REMOVE TOP PLATE
- (2) ATTACH SUPPORT WIRES TO THE FILTER AS DESCRIBED IN THE INSTRUCTIONS
- (3) ATTACH WIRES TO LOUVRE OPENING IN THE TOP PLATE. SCREEN SHOULD BE CENTERED, LEVEL AND SUSPENDED THREE-QUARTERS OF AN INCH (3/4") FROM BOTTOM OF TOP PLATE (SEE ILLUSTRATION).
- (4) REPLACE TOP PLATE WITH FILTER ATTACHED AND START YOUR HEATER.

INSTRUCTIONS FOR MOONLIGHTER™ by KERO-SUN INC.®



IF YOU HAVE ANY DIFFICULTY, CONSULT YOUR DEALER. HE CAN HELP



Breathe Easy™
160 CASSELL ROAD • BOX 144
HARLEYSVILLE, PA 19438

NEITHER THE MANUFACTURER NOR THE SELLER ASSUMES LIABILITY FOR IMPROPER INSTALLATION